



# green SIDE UP

OFFICIAL NEWSLETTER OF COASTAL GREENERY LANDSCAPING

Serving Glynn, Camden, Nassau, McIntosh, Wayne, Liberty, Bryan & Chatham Counties | MAY 2023



## Traffic Control Affects Property Appearance

**The majority of landscapes are designed for functional, recreational and ornamental purposes. The unplanned or excessive use and enjoyment of these landscaped areas can cause serious injury and even the loss of turf and landscape plants.** Traffic is the term we apply to the off-road use by pedestrians or vehicles of your property. Although most good landscape designs take into account the expected use of the property and the associated traffic effects, there's a very good chance that either cars and trucks or pedestrians will find and use shortcuts you and your planners had not anticipated. These unexpected routes across your landscape will eventually create traffic problems and the need to take traffic control measures. When traffic becomes excessive, it results in four basic problems: turf grass wear, soil compaction, soil displacement, and soil removal or divots. Of these, turf grass wear and soil compaction are the most common.



## Properties of the Month: MAY

**Savannah Yacht Club**  
*Savannah*



**Tracey Beilen**  
*Support Services*



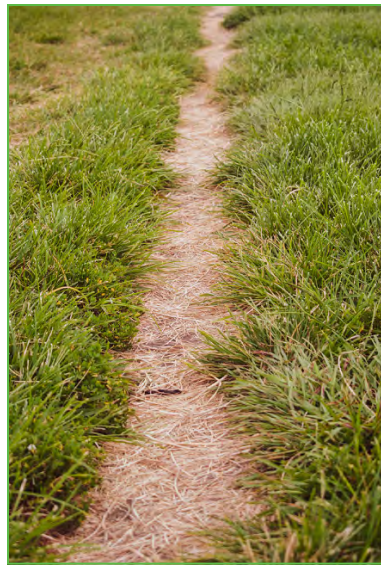
**Grey Owl Inn**  
*Golden Isles*



**NSB**  
*South*



*Each property is selected by the Branch Manager according to the crew's monthly Quality Control report.*



## Effects of Concentrated Traffic

Most strands of grass can recover quickly from a weekend festival, occasional sporting events, or even being used as a short-term parking lot. But turfs are injured, seriously thinned, or completely killed by continued, concentrated traffic. The difference has a lot to do with the duration of the traffic. The harmful effects of this type of repeated, concentrated traffic on turf are collectively referred to as **“turf grass wear.”** On an occasional basis, the turf can recover. But when subjected to this type of treatment constantly, death to the turf will almost certainly occur.

A second, less obvious effect occurs in the underlying soil and is sometimes referred to as the **“hidden effect.”** The mechanical pressure of applied traffic results in soil compaction. This configuration of the soil severely restricts air and water movement. Even though this compaction takes place within only 2 or 3 inches of the soil surface, it can adversely affect turf grass performance and recovery potential.



## Take Control of Traffic

You can control traffic while enhancing your landscape. The first step is to determine the problem areas on your property. Some questions to ask are:

- **How do visitors get from the street, parking lot or drive to the entrance?**
- **Is there a problem where deliveries are received, trash removed, or outside maintenance equipment stored?**
- **Are there many sidewalks that consistently get their corners cut off?**

You may want help with the next part - determining what to do about all those traffic problems. Some questions you might ask are:

- **Do you want visitors or customers to move in and out quickly?**
- **Does the flow of your landscaping help speed things up or slow them down?**

## Choose Control Materials Accordingly

**Pedestrian/Visitor Traffic Control:** The use of ornamental plants, hedges and shrubs to redirect traffic is usually preferred to fences, chains and posts because they enhance rather than detract from the natural beauty of the property.



## Team Members of the Month: MAY

**Devin Jennings**  
South



**Dewitt Wood**  
Support Services



**Chase Hall**  
Golden Isles



**Julio Negrete**  
Savannah



*These team members display the company core values (Safety, Quality, Leadership, Relationships) in all that they do while working, have excellent attendance, and are constantly trying to improve themselves.*

The traffic control design should offer a number of alternate routes from one location to another.

**Vehicle Traffic Control:** This may stronger measures. It can take a large boulder or substantial barricade to communicate with drivers. The rule in vehicle control is that to be effective, the obstacle must pose a substantial threat of damage to the vehicle before gaining the respect of drivers.

Traffic control is valuable in minimizing turf grass wear and soil compaction. Depending on the location and surrounding landscape, these can include:

- |                   |                |                   |
|-------------------|----------------|-------------------|
| <b>Concrete</b>   | <b>Asphalt</b> | <b>Wood Mulch</b> |
| <b>Pine Straw</b> | <b>Sand</b>    | <b>Stone</b>      |
| <b>Brick</b>      | <b>Gravel</b>  | <b>Tanbark</b>    |



## How to Repair Ruts

**Especially during the rainy times of the year, ruts can be created when weight is placed on an area that has become soft from too much moisture.**

Some areas of your property may hold water and create a “squishy”, muddy ground and any object of weight will cause the ground under it to rut as well as damage the turf. Just as ruts are easily created, they are just as easy to correct.

Small ruts can be corrected by simply using a garden fork to loosen up the compacted area. Doing this a few times will loosen up the rutted area. Large or deep ruts will need a little more work to loosen up the compacted soil. Using a spade, dig up any salvageable sod setting it to the side, and loosen the compacted soil turning the soil several times. The addition of a mixture of equal parts sand and soil to the area will help to make the ground level. Top with the sod that was set to the side. The addition of this mixture will give the roots of any salvageable sod a good chance of becoming established.





# The Best Turf is Just for Playing Around

You may not realize that the turf that gets the very best care are on baseball, football, and soccer fields, and, of course, golf courses. All the care these lawns receive is not just for good looks. With the kind of heavy use sporting fields receive, intensive care is essential!.

## Good Turf Helps Prevent Injury

Uneven, thin, or clumpy turf can cause injury to anyone walking on the turf. Extremely hard, non-irrigated surfaces can lead to twisted ankles, broken bones, or worse. Practices like consistent watering, good mowing habits, making sure that there is good drainage, careful fertilization, and pest control are the ingredients to keeping turf healthy and strong.



## We're here for *you.*

Helping your property look great is what we do, but making sure you're satisfied is what keeps us going. We've learned that when we focus on complete customer satisfaction, all the rest falls in line.

We're here for you - to follow up on work we've done for you, to answer questions or to discuss further improvements to your outside spaces.

We count on the good name we've built with our customers to get new business. If you have a friend, neighbor or co-worker in need of landscape services, we'd appreciate you recommending us. We'd like to meet them and work with them to beautify their landscapes, too.

Of course, it's always a great pleasure to get a call from a current customer about a new project. Please call us anytime. We'd love to hear from you.



Have a question or concern? We're here to help.

Contact the **COASTAL GREENERY** Team

**(912) 261-8171 | COASTALGREENERY.COM**    