



# green SIDE UP

OFFICIAL NEWSLETTER OF COASTAL GREENERY LANDSCAPING  
Serving Glynn, Camden, Nassau, McIntosh, Wayne, Liberty, Bryan & Chatham Counties | JAN 2024



## Winter Landscape Management

### 1. Hard Pruning

**Pruning this time of year is an important part of any good landscape maintenance program**, and it is a great way to keep trees and shrubs “in bounds” while helping them to maintain a pleasant shape.

It is much easier to see where pruning needs to take place during the winter since most leaves will have dropped. In addition, plants are less active during the winter months, with less fluid moving through the branches. This means that the wounds created from pruning will drain less and will heal more quickly.

#### **Trees and shrubs should be pruned in the winter**

- to remove branches that overlap and rub against each other
- to remove any dead wood
- to keep stray branches from blocking your driveway, walkways, and windows

This will lead to healthier, better-looking trees and shrubs and a more functional, aesthetically pleasing landscape.

**Now is a great time for cutting back your ornamental grasses.** Old growth can be tied back with twine, and the grass cut 4” to 6” from the ground to spur new growth. Any perennial plants that were left standing over the winter need to be pruned at this time to encourage new growth and blooms.

# Properties of the Month: JANUARY

**Hamilton Landing**  
*Golden Isles*



**Thrive Senior Living**  
*Savannah*



**Gulfstream**  
*Support Services*



**Hodnett Cooper**  
*South*



*Each Property of the Month is selected by the Branch Manager according to the crew's monthly Quality Control report.*

**Along with these guidelines, there are further nuances that warrant consultation from landscape professionals.** For example, some varieties of azaleas and oakleaf hydrangeas bloom in the summer but set their buds the previous year. The proper pruning technique and frequency varies greatly from species to species, there is no 'one size fits all' routine. At Coastal Greenery, we schedule pruning accordingly so that plant health and beauty is maximized.



## 2. Aeration

**Soil compaction, which results from heavy lawn use over time, can lead to decreased top growth and overall turf deterioration if steps aren't taken to correct it.**

When soil is compacted, the pore spaces that hold oxygen are reduced in size. Roots need this oxygen to grow, and they're literally starved of it in compacted soil. The best way to relieve soil compaction is to have your turf aerated annually.



### Benefits of Aeration

Aeration is one of the best things you can do for turf, and it provides multiple benefits, including:

- Better rooting
- Increased flow of water, nutrients, and oxygen to the roots
- Breakdown of the thatch layer, which can become harmful if it gets too thick.
- Prevents fertilizer and/or pesticide run-off.
- Helps protect turf from the effects of drought conditions.
- Aids with overseeding.

Contact your Client Relations Leader and get your property on the schedule for aeration!

## 3. Turf Disease

**Lawns are vulnerable to all sorts of fungus diseases,** many of which thrive in cool, moist conditions.

A variety of factors influence turf disease development, including how turf is managed, the environment the turf grows in, and the weather. Proper feeding, watering, and mowing will improve the turf's strength and increase resistance to fungus, but sometimes even healthy lawns come under attack.

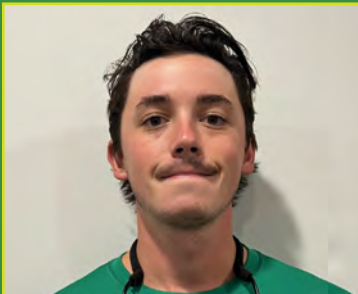
The symptoms of lawn disease vary depending on the specific fungus causing

## Team Members of the Month: JANUARY

**Romia Bell**  
*Golden Isles*



**Griffon Patton**  
*Support Services*



**Raymond Singleton**  
*Savannah*



**Michael Austin**  
*South*



These team members display our core values (**Responsive, Ownership, Observant, Trusted, Skillful**) in all that they do while working, have excellent attendance, and are constantly trying to improve themselves.

the disease, but some of the more common signs include:

- Patches of silver-gray or bleached white turf
- A pinkish or yellowish cast to the lawn
- Purplish-brown spots with lighter centers on grass blades

Some fungus diseases can kill off large portions of turf, so it's best to act quickly if you notice symptoms like those mentioned here. Fungicide treatments may be needed to improve the turf's chances for recovery and decrease the potential for long-term damage.



### 4. Taming the Wilds

**Chances are, there's an area of your property that doesn't provide the enjoyment or usefulness it should.** Most properties have some form of what we call "the wild side." It may be a small corner, where roses once bloomed, or an area beside that could use a stone walkway, lined with flowers, to create a nice entryway.

Almost any area can become easier to maintain, more attractive, and more useful with careful planning.

Unruly areas can become stunning gardens by combining landscape plants and "hardscape" elements like a paver patio and tiered flower beds. Your design options can be limitless with some knowledge and creativity.

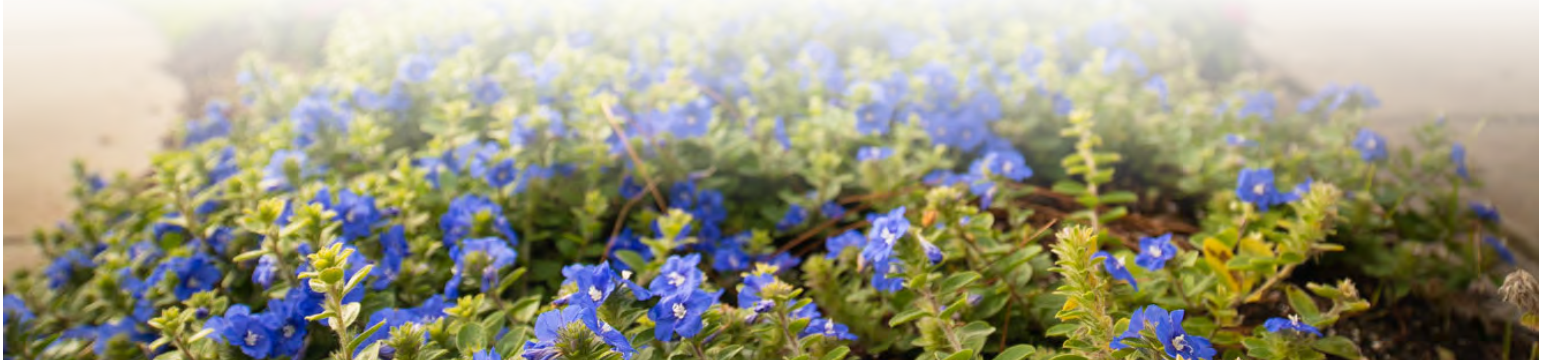
Take a good look at your existing landscape and think about the "wilds" you'd like to tame. Seek professional help and advice to get fresh suggestions and ideas for how to bring a space, no matter what size, to full enjoyment.



(Winter Landscape Management, cont'd)

## 5. Winter Tasks

- Install new mulch to protect and insulate plants against harsh freeze, to add color and keep weed germination minimal.
- Turn irrigation systems off during winter months, very little watering should be required; also periodically check system to insure it's working properly and nothing is broken.
- Inspect shrubbery for disease and insects!
- Raise mower decks and keep lawns free of leaf build up.
- Fertilized shrubbery and lawns with a good root enhancing fertilizer; no nitrogen is necessary during this season.
- Also consider installing winter annuals such as pansies to add a splash of color to bed areas.



## We're here for *you.*

Helping your property look great is what we do, but **making sure you're satisfied is what keeps us going.** When we focus on complete customer satisfaction, the rest falls in line.

**We're here for you** - to follow up on work we've done for you, to answer questions or to discuss further improvements to your outside spaces.

**We count on the good name we've built with our customers to get new business.** If you have a friend, neighbor or co-worker in need of landscape services, we'd appreciate you recommending us. We'd like to work with them to beautify their landscapes, too.

Of course, it's always a great pleasure to get a call from a customer about a new project. Please call us anytime.

**We would love to hear from you.**



Have a question or concern? We're here to help.  
Contact the **COASTAL GREENERY** Team  
(912) 261-8171 | [COASTALGREENERY.COM](http://COASTALGREENERY.COM)    